

Kalasadaman Kummeli



Sörnäisten rantatie 29, Sörnäinen
00500, Helsinki



Kalatataman Kummeli

Property information

The full-service Business Park Kalatataman Kummeli flexibly serves the needs of various customers. The industrial-style maritime property was completely renovated in 2015. Kalatataman Kummeli is a great choice for companies that value versatile services and a central location.

Kalatataman Kummeli offers space solutions of different sizes, from small office rooms for a few people to large office complexes with an entire floor. The property has a wide selection of services.



In-house services

- ✓ Reception
- ✓ Canteen
- ✓ Catering
- ✓ Leasable meeting rooms
- ✓ Car wash
- ✓ Dressing rooms

Nearby services

- ✓ Restaurant
- ✓ Health club
- ✓ Hairdresser

Kalasadaman Kummeli

Vuokrattavat toimitilat

Office 16 sqm / 3. floor

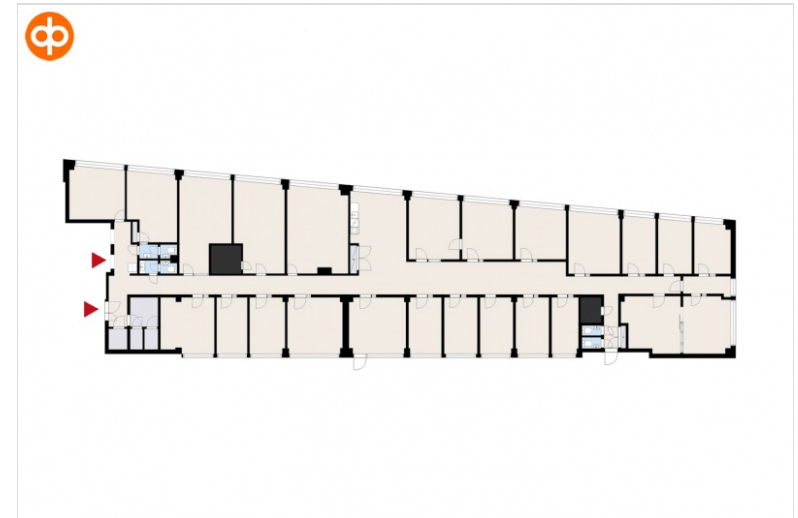
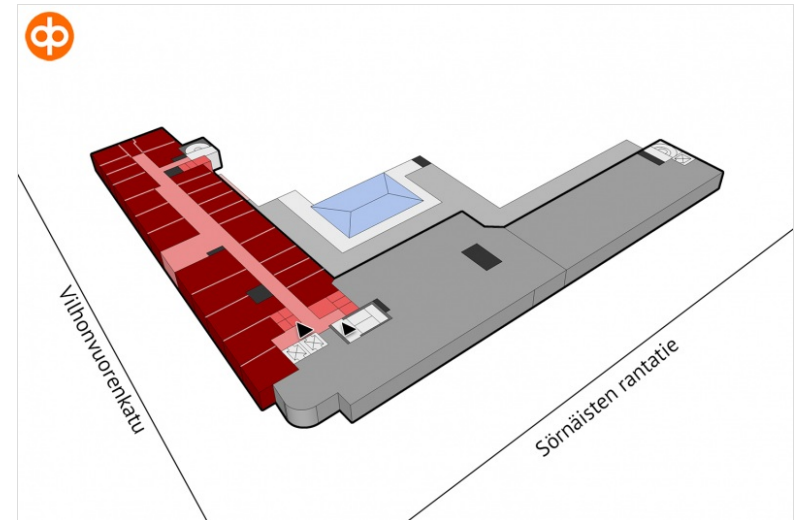
Office rooms for 3-4 people available for rent. The kitchen, lounge and social spaces are shared on the floor. The rent includes electricity and basic lobby service. The completely renovated, maritime-inspired, full-service Kalasadaman Kummeli Business Park flexibly serves the needs of various customers. Excellent location in the center of Sörnäinen, Kalasatama and Suvilahti, metro and REDI are within walking distance.

Features: Air conditioning, car washing, dressing rooms
divisible/expandable: 22 / 32 sqm
Street address: Vilhonvuorenkatu 12, 00500 Helsinki
Availability: Vacant

Leasing contact:



Heikki Tirkkonen
TopReal LKV Oy
040 585 5421
heikki.tirkkonen@topreal.fi



Kalasadaman Kummeli

Vuokrattavat toimitilat

Office 55 sqm / 2. floor

Ready-to-move-in office space for rent in a full-service property. Kalasatama's Kummeli Business Park flexibly serves the needs of various customers. Excellent location in the center of Sörnäinen, Kalasatama and Suvilahti, metro and REDI are within walking distance.

Features: Air conditioning, car washing, dressing rooms

Street address: Sörnäisten rantatie 29, 00500 Helsinki

Availability: Vacant

Leasing contact:

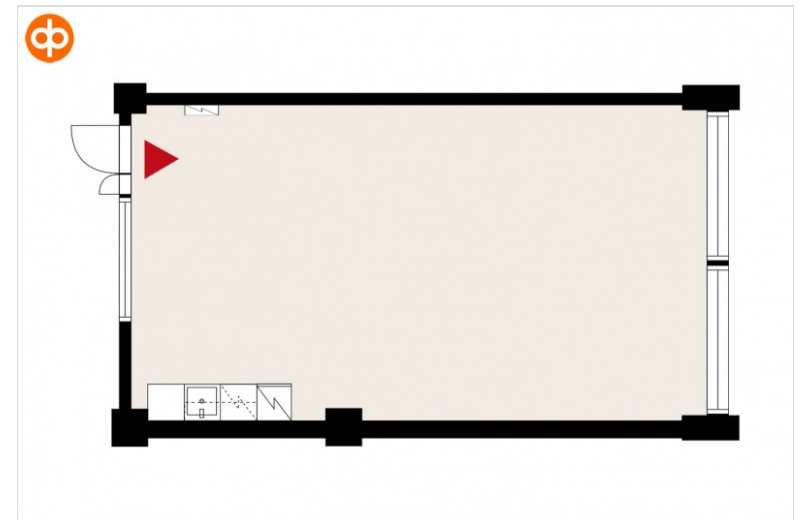
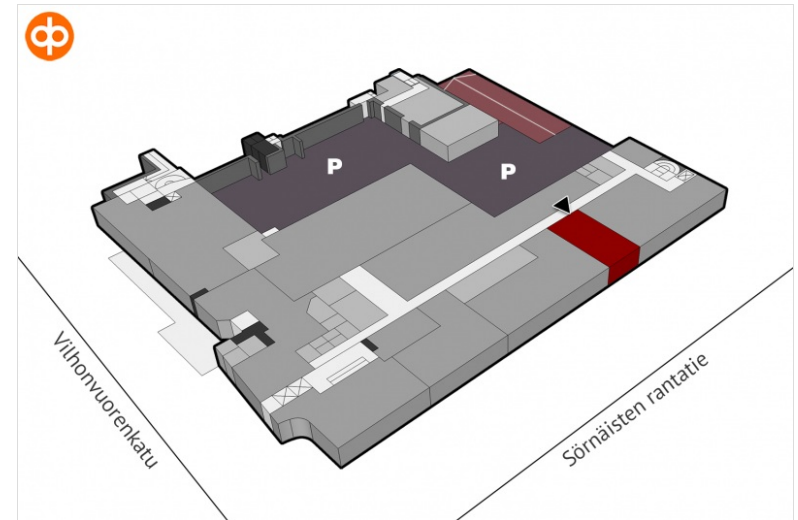


Heikki Tirkkonen

TopReal LKV Oy

040 585 5421

heikki.tirkkonen@topreal.fi



Kalasadaman Kummeli

Vuokrattavat toimitilat

Office 278 sqm / 4. floor

Available for rent ready-to-move-in premises at the end of the house that can be easily modified according to the customer's needs. Kalasatama's Kummeli Business Park services are available. Excellent location in the center of Sörnäinen, Kalasatama and Suvilahti. Metro and REDI are located within walking distance.

Features: Air conditioning, car washing, dressing rooms, open/combi office

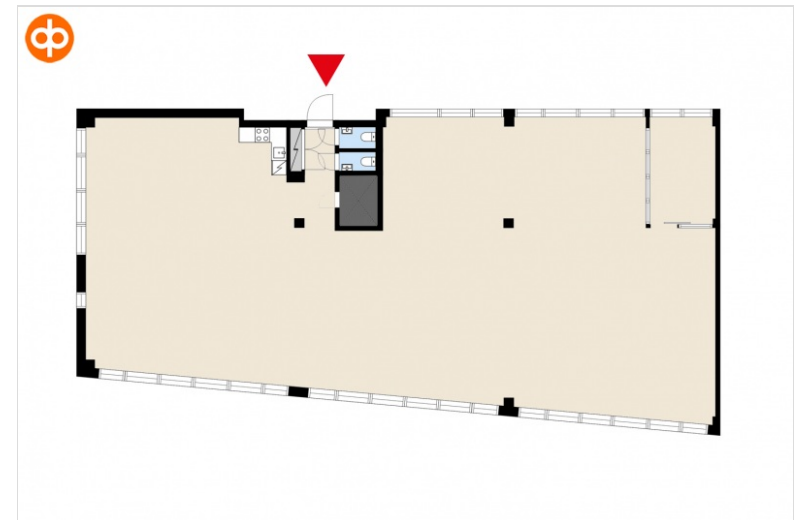
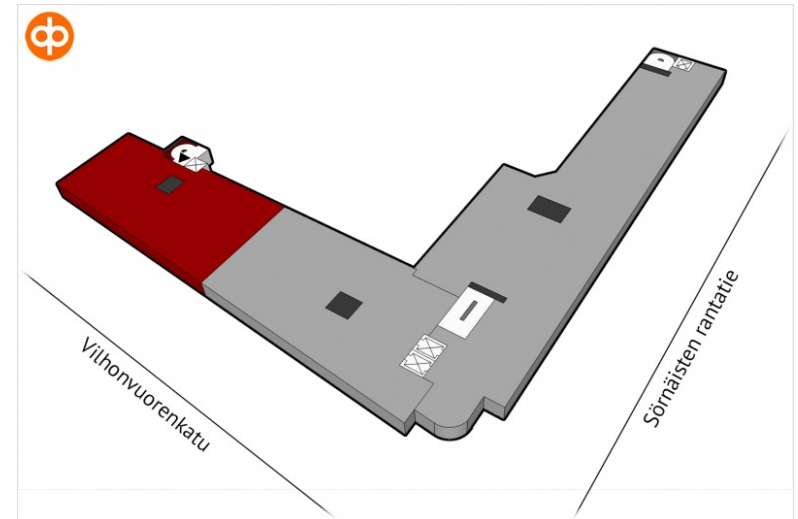
Street address: Vilhonvuorenkatu 12, 00500 Helsinki

Availability: Vacant

Leasing contact:



Heikki Tirkkonen
TopReal LKV Oy
040 585 5421
heikki.tirkkonen@topreal.fi



Kalasadaman Kummeli

Vuokrattavat toimitilat

Office 318 sqm / 4. floor

For rent a ready-to-move multi-room office located on the fourth floor of the property. Kalasatama's Kummeli Business Park services are available to tenants. The property's excellent location in the center of Sörnäinen and Kalasatama and walking distance from the metro station and shopping center REDI make everyday life easier.

Features: Air conditioning, car washing, dressing rooms, open/combi office

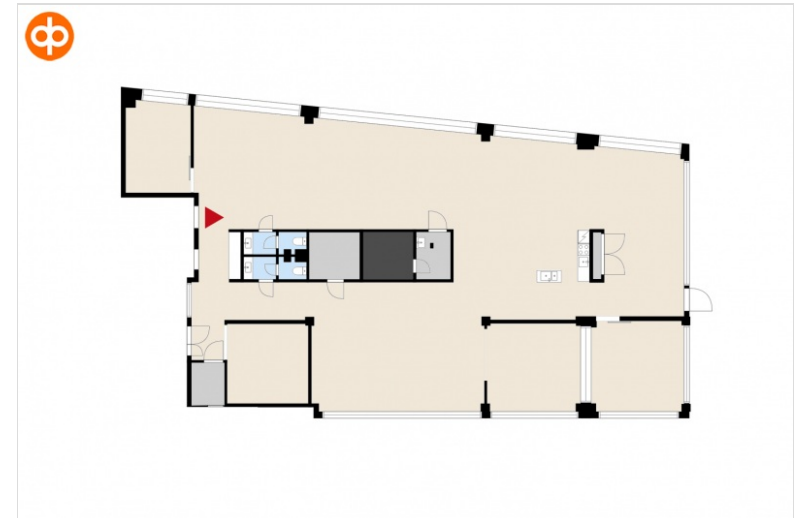
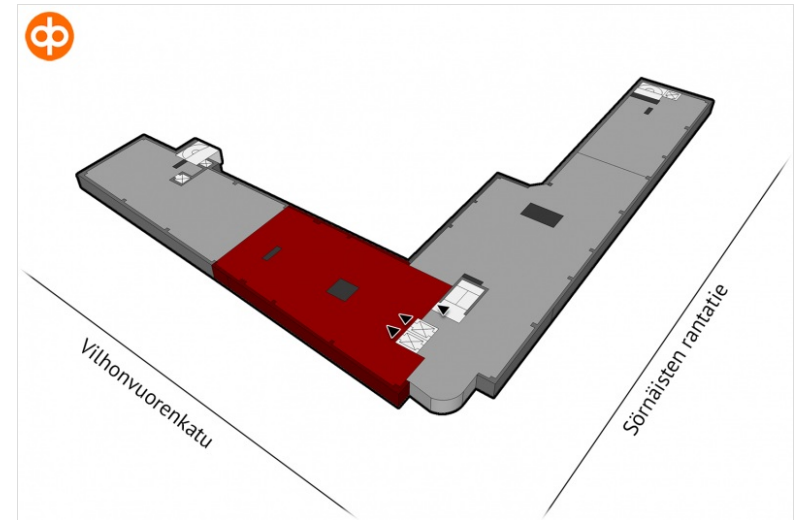
Street address: Vilhonvuorenkatu 12, 00500 Helsinki

Availability: Vacant

Leasing contact:



Heikki Tirkkonen
TopReal LKV Oy
040 585 5421
heikki.tirkkonen@topreal.fi



Kalasadaman Kummeli

Vuokrattavat toimitilat

Office 493 sqm / 4. floor

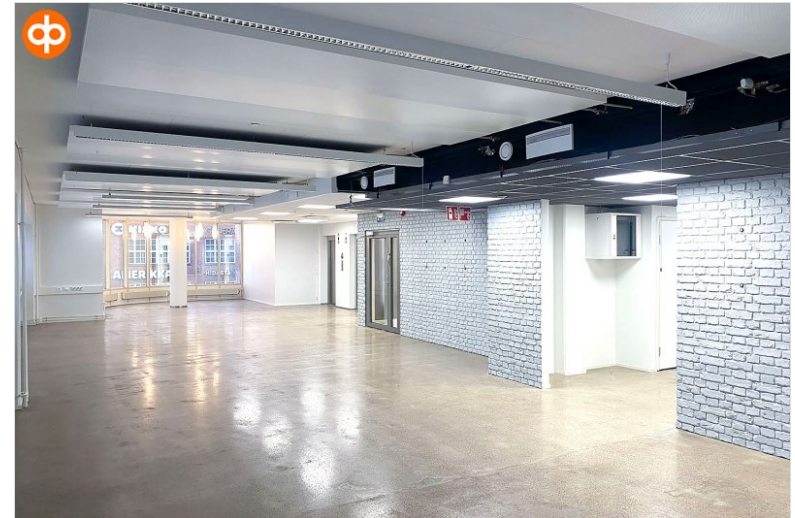
A bright open-plan office, which has previously functioned as a combined industrial-style showroom and office. The space can be used as flexible premises for a wide range of needs. The full-service Kalasadaman Kummeli Business Park flexibly serves the needs of various customers. Excellent location in the center of Sörnäinen, Kalasatama and Suvilahti, metro and REDI are within walking distance.

Features: Air conditioning, car washing, dressing rooms, open/combi office

Street address: Sörnäisten rantatie 29, 00500 Helsinki

Availability: Vacant

Leasing contact:



Kalasadaman Kummeli

Vuokrattavat toimitilat

Office 919 sqm / 6. floor

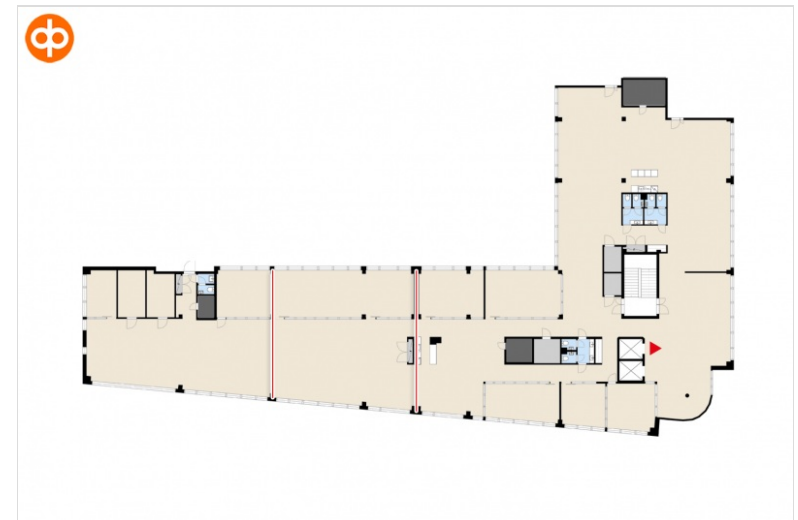
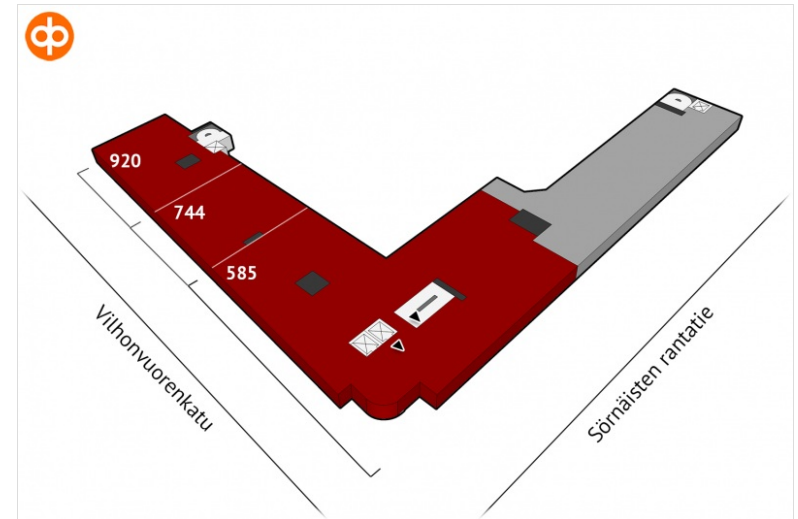
A bright multi-room office on the top floor with great views of Suvilahti and the sea. The premises can be used as a flexible entity for a wide range of needs. The completely renovated, maritime-inspired, full-service Kalasadaman Kummeli Business Park flexibly serves the needs of various customers. Excellent location in the center of Sörnäinen, Kalasatama and Suvilahti. Metro and shopping centre REDI are within walking distance.

Features: Air conditioning, car washing, dressing rooms,
open/combi office
divisible/expandable: 585 / 744 sqm
Street address: Vilhonvuorenkatu 12, 00500 Helsinki
Availability: Vacant

Leasing contact:

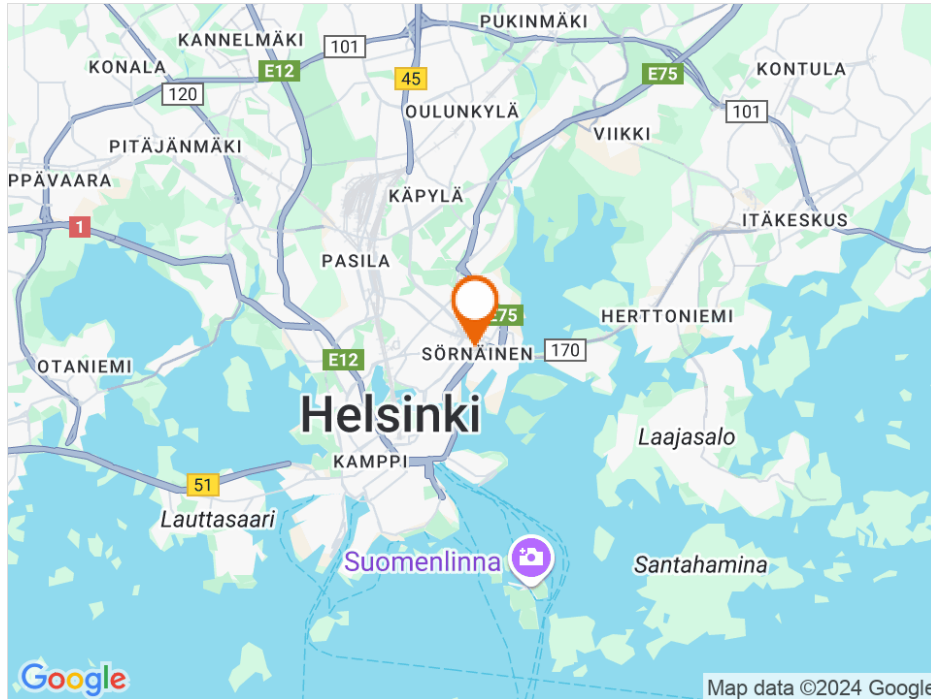


Heikki Tirkkonen
TopReal LKV Oy
040 585 5421
heikki.tirkkonen@topreal.fi



Kalasadaman Kummeli

Location



Sörnäisten rantatie 29, Sörnäinen, 00500 Helsinki



Transport links

 Metroasema 600 m  Raitiovaunupysäkki 600 m  Bussipysäkki 100 m  Juna-asema 3,8 km  Lentoasema 16,7 km

OP Kiinteistösijoitus Oy vuokraa toimitiloja

OP Real Estate Asset Management Ltd is a real estate asset management company owned by OP Financial Group. As a landlord, we represent several quarters within our group. In addition, we manage real estate investments in real estate funds and direct real estate investments by our customers. We are one of the largest real estate asset managers in Finland.

Our leasing partner is Newsec Property Asset Management Finland Oy. Our primary contact persons are:

In matters of leasing agreements and properties, our customers are served by our property managers:



Viktoria Mönkkönen
tel. +358 40 651 6342
viktoria.monkkonen@newsec.fi



Jari Vepsäläinen
p. 010 252 2322
jari.vepsalainen@op.fi



Jaan Laakkonen
tel. +358 50 597 8101
jaan.laakkonen@newsec.fi



Jarl Virala
p. 010 252 7278
jarl.virala@op.fi



OP Business Premises

Visiting address: Gebhardinaukio 1, 00510
Helsinki | Mailing address: PL 1068, FI-00013 OP
| Tel.: +358 10 252 010 (switch)